

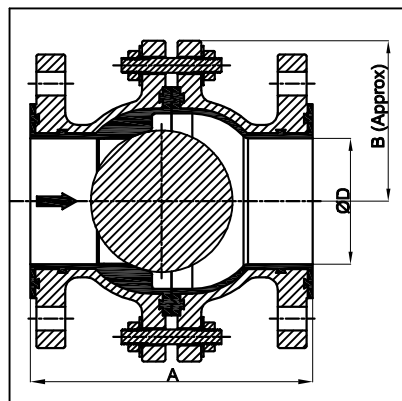


Features



Dual Plate Check Valve is an all purpose non return valve that is much stronger, lighter in weight and smaller in size compared to a conventional swing check valve or lift check valve

Design Standard : Manufacturer Standard
Testing Standard : API 598



Test Pressure in Bar

		Class	150
Hydro Test	Body		15
	Seat		11
Spark Test	Body		20 Kv

Size		Class - 150		
mm	in	A	B (Approx.)	ØD
15	1/2	108	35	13
20	3/4	117	45	19
25	1	127	50	25
40	1 1/2	165	55	38
50	2	178	65	51
65	2 1/2	190	70	64
80	3	203	85	76
100	4	229	130	102

All Dimensions are in "mm"

MATERIALS

Body	ASTM A 216 Gr. WCB, ASTM A 351 Gr. CF8 / CF8M / CF3 / CF3M
Ball	PTFE Solid
Body Lining	PFA, FEP
Fasteners	ASTM A 193 Gr. B7, ASTM A193 Gr. B8, ASTM A193 Gr. B8M ASTM A194 Gr. 2H, ASTM A194 Gr. 8, ASTM A194 Gr. 8M

NOTE:

- Please specify flow medium, working pressure, temperature & service conditions.
- Other materials not mentioned above are available on request.
- Lining Thickness minimum 3 mm.
- Raised Face without serration.
- Face to Face standard as per ASME B 16.10
- End Connection as per ASME B 16.5
- In the process of continuous improvement of products, the data given herein is subject to change.

T. S. PUMPS & VALVES PVT.LTD.



B-490, Industrial Estate, Gokul Road,
Hubballi-580030, Karnataka, INDIA
Phone : +91-836-2331096 / 0836-2210615
Email : tsvalves9@gmail.com / tspv9@airtelmail.in
Website : www.tsvalvesindia.com

TSPV: CAT-016/R-00
Date : 16/10/2020