



# T. S. PUMPS AND VALVES PVT. LTD.

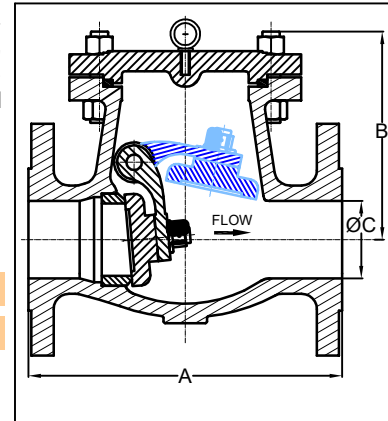
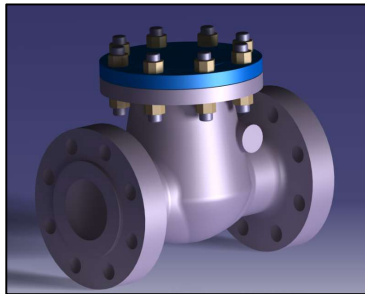
## CAST STEEL SWING CHECK VALVE

CLASS: 150, 300 & 600

### Features

Heavy duty bolted cover, with renewable & integral seating. Body mounted disc design, valves with most advanced design features providing the ultimate reliability. API 6D Full Port Open.

Design Standard: API 6D (SCV),  
BS EN ISO 15761 (LCV)  
Testing Standard: API 598/ BS EN 12266-1



### Test Pressure in Bar

	Class	150	300	600
Hydro Test	Shell	30	76	156
	Seat/ Back Seat	22	56	113
Air Test	Seat	07	07	07

Size		Class - 150				Class - 300				Class - 600			
mm	in	A	B	ØC	Wt *	A	B	ØC	Wt *	A	B	ØC	Wt *
15	1/2	108	54	15	2.3	152	54	15	2.8				
20	3/4	117	66	20	3.0	178	66	20	4.0				
25	1	127	72	25	4.5	203	72	25	6.0				
40	1 1/2	165	102	40	9.2	229	102	40	12.5				
50	2	203	145	50	16	267	145	50	19	292	170	50	23
80	3	241	175	74	28	318	180	74	37	356	210	74	48
100	4	292	205	100	44	356	210	100	57	432	260	100	91
150	6	356	250	150	77	444	275	150	117	559	305	150	158
200	8	495	310	201	120	533	340	201	176	660	385	201	302
250	10	622	370	252	180	622	410	252	297	787	450	252	446
300	12	698	430	303	280	711	475	303	435	838	520	303	670

All Dimensions are in "mm"

### MATERIALS

Body & Cover  
Disc & Seat ring  
Gasket  
Stud / Nut  
Spring  
Surface Protection for carbon steel Valves

ASTM A 216 Gr. WCB, ASTM A 352 Gr. LCB, ASTM A 351 Gr. CF8/ CF8M/ CF3/ CF3M.  
WCB with 13% Chrome Overlay/ ST on seal faces, ASTM A351Gr. CF8/ CF8M/ CF3/ CF3M  
Spiral Wound 304 / 316 Grafoil  
ASTM A 193 Gr. B7 / B8 /B8M , ASTM A 194 Gr. 2H / 8 /8M  
SS 316  
Prime Coat: Chlorine free with modified alkyd resin unobjectionable in physiological and toxicological respects. Additional external coating: Silver Streak aluminium paint

### NOTE:

- \*Net Wt in Kg. approx. (without obligation).
- Please specify flow medium, working pressure, temperature & Service conditions.
- Other materials not mentioned above & higher sizes are available on request.
- Valve sizes from DN 15 to DN 40 are Lift Check Valves (LCV) and above are Swing Check Valves (SCV)
- Face to Face as per ASME B 16.10
- End Connections as per ASME B 16.5
- Butt-Weld End to ASME B 16.25
- Ring Joint, Large or Small tongue & Groove flanges are available on request.
- Valves can be supplied with IBR, Soft Seat & Jacketed.
- Valves can be supplied with Dead Weight & Dash Pot Arrangement.
- In process of continuous improvement of products, the data given here in is subject to change

### T.S. PUMPS & VALVES PVT.LTD.

B-490, Industrial Estate, Gokul Road,  
Hubballi-580030, Karnataka, INDIA  
Phone : +91-836-2331096 / 2210615  
Email : sales@tsvalvesindia.com  
Website : www.tsvalvesindia.com



TSPV: CAT-011/R-02  
Date : 02/03/2021