



### Features

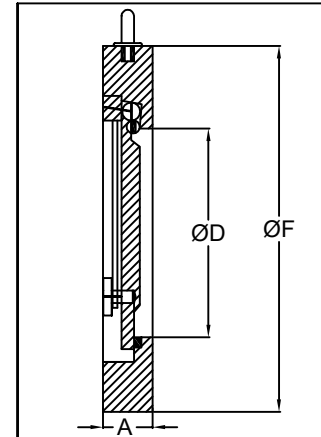


These valves are general purpose valves that are stronger, lighter and smaller than conventional swing check & are, therefore, less expensive to install and maintain.

Design Standard : API 6D  
Testing Standard : API 598 / BS EN 12266-1

### Test Pressure in Bar

	Class	150	300
Hydro Test	Shell	30	76
	Seat	22	56



Size		Class - 150			Class - 300		
mm	in	A	ØD	ØF	A	ØD	ØF
40	1 1/2	19	20	85	19	20	95
50	2	19	30	105	19	30	111
65	2 1/2	19	40	124	19	40	130
80	3	19	52	137	19	52	149
100	4	19	71.5	175	19	71.5	180
125	5	19	93	197	22	93	216
150	6	19	114	222	22	114	250
200	8	29	157	279	29	157	307
250	10	29	195	340	38	195	362
300	12	38	240	410	51	240	422

All Dimensions are in "mm"

### MATERIALS

Body	CI IS 210 Gr. FG 260, MS IS: 2062 Gr. B, SGI, ASTM A 216 Gr. WCB, ASTM A 351 Gr. A 351 Gr. CF8/CF8M
Disc	MS IS: 2062 Gr. B, ASTM A 216 Gr. WCB, ASTM A 351 Gr. CF8 & CF8M
Spring	SS 316
Sealing Seat	Nitrile, Viton, EPDM, Silicon
Eye Bolt	Steel IS : 4190
Button	ASTM A 276 Gr. SS 316

### NOTE:

- \*Net Wt in Kg. approx. (without obligation).
- Please specify flow medium, working pressure, temperature & service conditions.
- Other materials not mentioned above & higher sizes are available on request
- Face to Face as per API 6D standard
- Valves to mount between Class 150 & Class 300 Flanges.
- In process of continuous improvement of products, the data given here in is subject to change

### T.S. PUMPS & VALVES PVT.LTD.



B-490, Industrial Estate, Gokul Road,  
Hubballi-580030, Karnataka, INDIA  
Phone : +91-836-2331096 / 2210615  
Email : sales@tsvalvesindia.com  
Website : www.tsvalvesindia.com

TSPV: CAT-009/R-00  
Date : 24/05/2017